

LET'S PUT THE C FAMILY CHORDS TO USE



RHYTHM # 2

STRAIGHT BEAT



RHYTHM NUMBER 2

Straight Beat Gospel Style

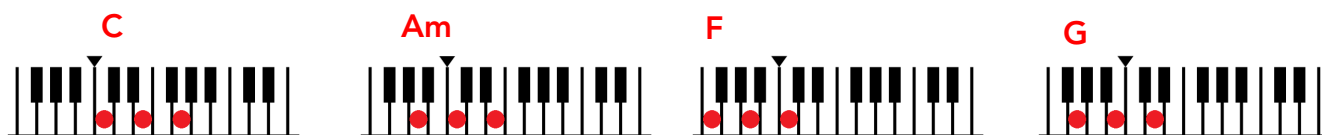
Remember the first chord sequence you played ? C Am F G

First of all you played each chord once in the right hand.
Then you played a left hand note followed by the right hand chord.

OK now let's try it another way

Play each chord **TWICE** - **SLOWLY** with your **RIGHT** hand
So **TWO** beats for **EACH** chord C C Am Am F F G G

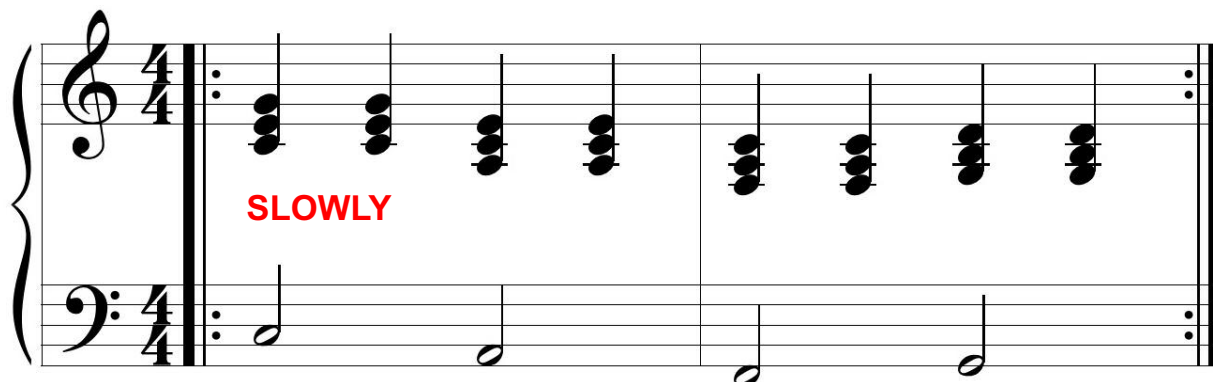
Along with the **FIRST** of the two beats play the **ROOT** note of the chord
(the note that gives the chord its name) one or two octaves lower down
the keyboard with the **LEFT** hand.



(note - these 3 chords are played below middle C)

RIGHT HAND CHORDS

C Am F G



LEFT HAND NOTES

C A F G

COUNT 1 2 3 4 1 2 3 4

Remember - this chord sequence is used in songs like

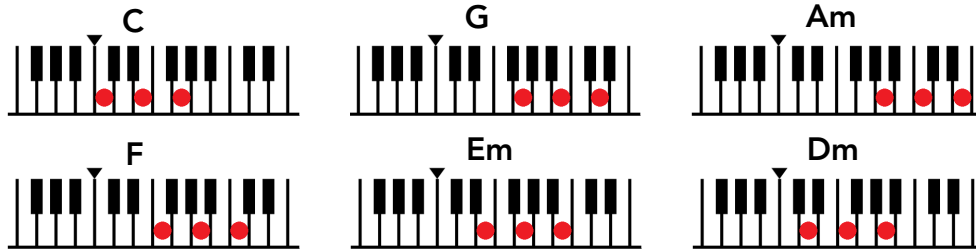
BLUE MOON, HEART & SOUL, OH WON'T YOU STAY, ALL I HAVE TO DO IS DREAM, ALWAYS LOOK ON THE BRIGHT SIDE OF LIFE and many more

Straight Beat Gospel Style

practice chord progression

The following chord sequence is another very common progression used in many Gospel songs and in slow songs such as **Let it Be**

CHORDS USED



VERY VERY SLOWLY

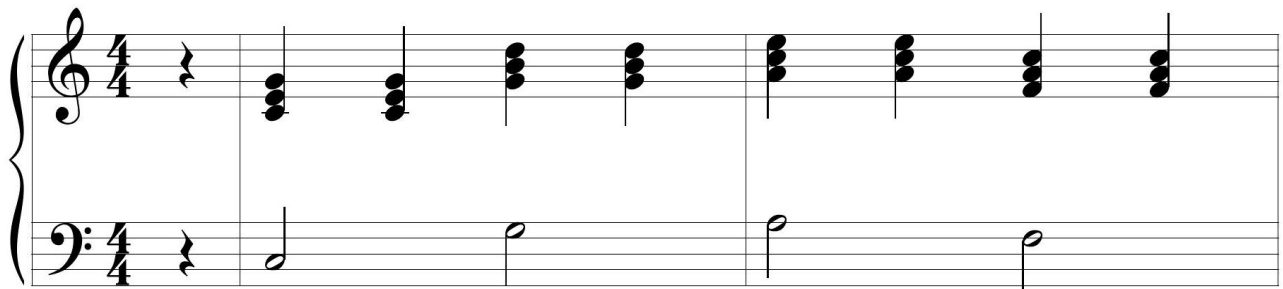
RH CHORDS

C

G

Am

F



LH Notes

C

G

A

F

C

G

F

Em Dm C

