

AN IMPRESSIVE
'BROKEN CHORD' BALLAD
THAT USES ALL THE BASIC
C FAMILY CHORDS



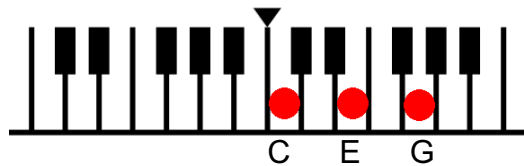
The amazing BROKEN CHORD BALLAD

Part 1

This tune is SO easy yet it sounds really fancy and complicated!
Everyone will be VERY impressed!

Once you learn the sequence using ONE chord it's really easy
to play the rest of the tune.

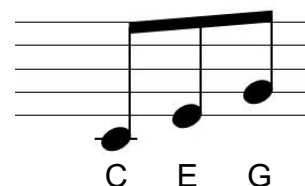
Think first of all about the **chord of C**
in your **RIGHT HAND**



Now instead of playing the three notes at the SAME time play them
ONE AT A TIME starting with C

So play the **C** note with your **THUMB**
Then play the **E** note with your **MIDDLE** finger
then play the **G** note with your **WEE** finger

This is called a 'BROKEN CHORD'
and here's how it looks in Music Notation



OK...so far so good!

Now try playing the SAME thing but with your **LEFT HAND**

So play the **C** note with your **WEE** finger (Left Hand)
Then play the **E** note with your **MIDDLE** finger (Left Hand)
then play the **G** note with your **THUMB** (Left Hand)

Great - now go to Part 2 →

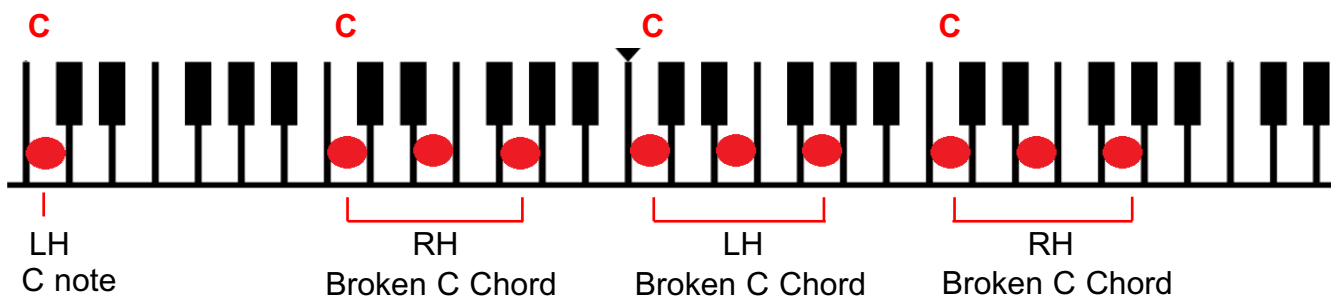
Part 2

Hopefully you can now play the chord of C as a BROKEN CHORD in both hands

Now for the exciting part

You're going to make a SWEEPING 'melody line' using broken chords

1. Play a SINGLE C note two octaves (16 keys) to the left of middle C in your LEFT HAND (any finger)
2. Then play a broken C chord one octave (8 keys) up from that note in your RIGHT HAND
3. Then lift your LEFT HAND **over** your right and play a broken C chord another octave up in your LEFT HAND
4. Finally sweep your right hand **under** the left and play a broken C chord another octave up in your RIGHT HAND



Keep the SUSTAIN pedal down throughout

Now see if you can play the same pattern but THIS time use the chord of F
Start off with an F note (LEFT HAND) low down the keyboard

GET THE IDEA?

To play the entire tune use the pattern with the following chord sequence

C, F, B^o, Em, Am, Dm, G, C

(End the tune on an 'extra' single C note)

The next page will show you what it looks like in Music Notation

The amazing BROKEN CHORD BALLAD

In Musical Notation

Keep the sustain pedal down throughout **EACH** bar

CHORDS C C C F F F B° B° B°

LH RH LH RH ETC

Count 1 and 2 and 3 and 4 and 5 and

CHORDS Em Em Em Am Am Am Dm Dm Dm

E A D

CHORDS G G G C C C C (end on a C note)

G C

*NOTE - The above notation is in '5/4' time which means there are 5 beats in each bar.
As you play you can count each bar as "1 and 2 and 3 and 4 and 5 and"*

You are VERY unlikely to ever play in 5/4 time again so don't worry if it seems complicated - it just happens to be the timing for this particular ballad