

RHYTHM # 3

BLUEBERRY HILL

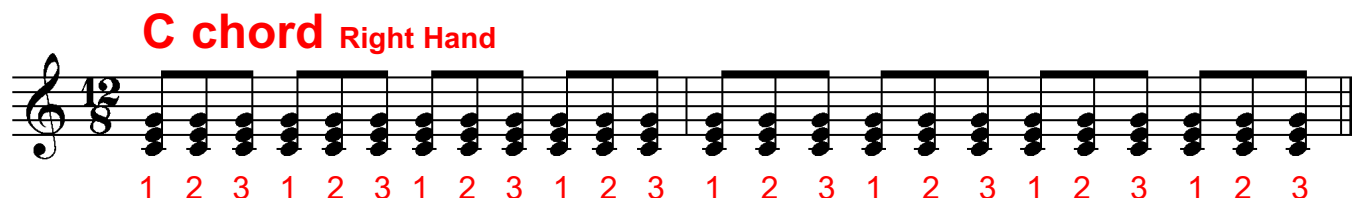


BLUEBERRY HILL RHYTHM

This is a rhythm known as 12/8 TIME or TRIPLET FEEL

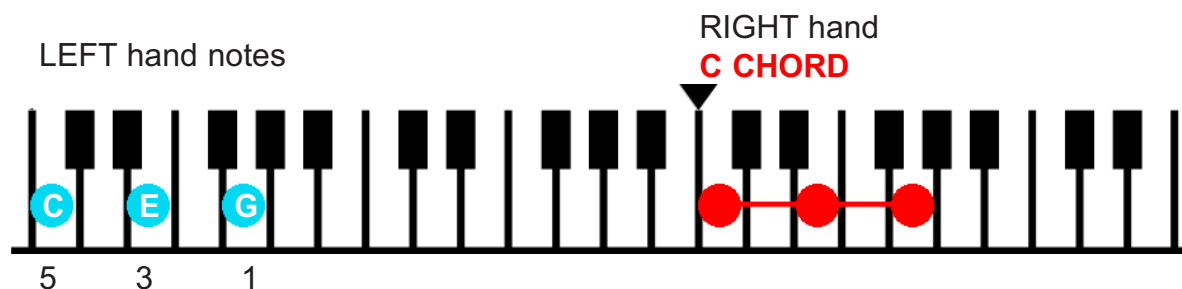
TRIPLET FEEL means that the basic rhythm comes in GROUPS of three notes.
In 12/8 TIME there are FOUR of these groups (of 3 beats) per bar.

So the RIGHT hand will be playing 12 'beats' per bar. Try it now with a C CHORD.



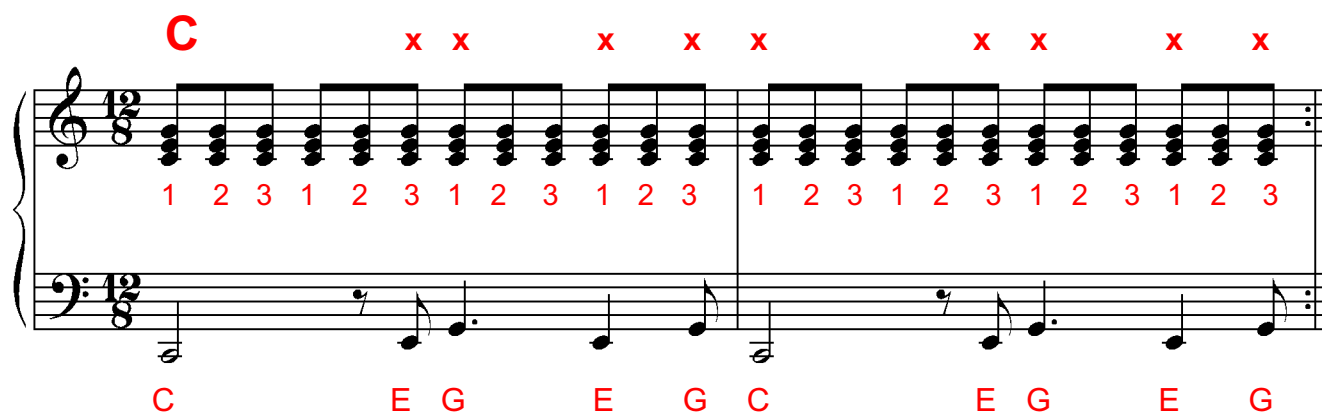
The LEFT hand plays a 3 note pattern

Like the TWIST rhythm the 3 notes of the LEFT hand 'match' the 3 notes of the RIGHT hand chord



Practise it SLOWLY at first.

Look carefully where the left hand notes come in (x)



Now TRANSPOSE this rhythmic pattern to the chords of F and G (below mid C)
and you'll have the 3 main chords for BLUEBERRY HILL