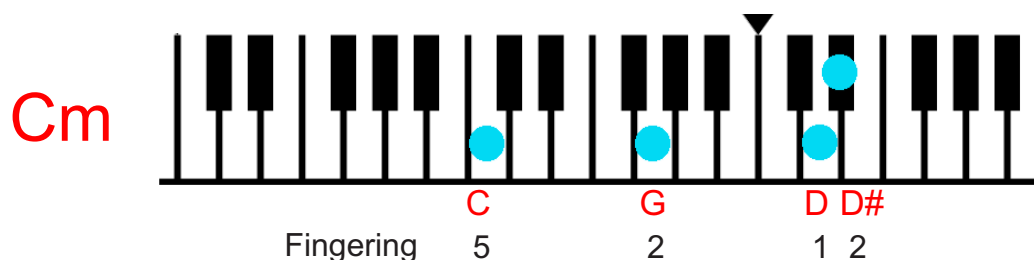


## EXTENDING THE LEFT HAND

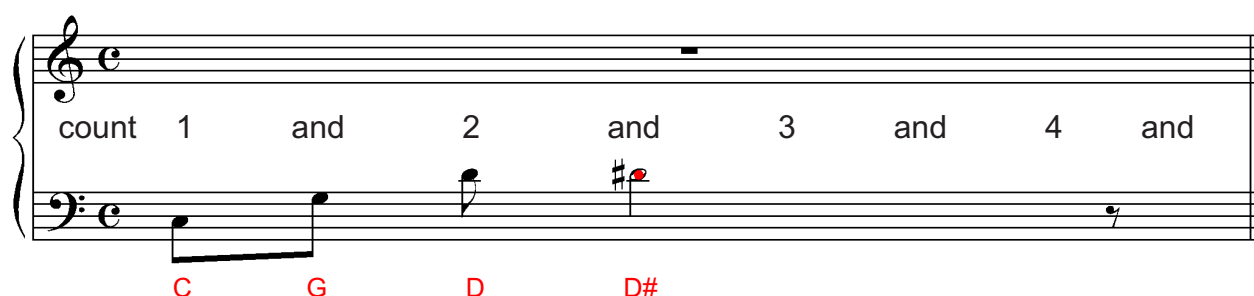
### A JAZZY LEFT HAND MINOR PATTERN

Let's try a different extended left hand pattern.  
This time you will play FOUR notes.  
Try the pattern with Cminor first of all.

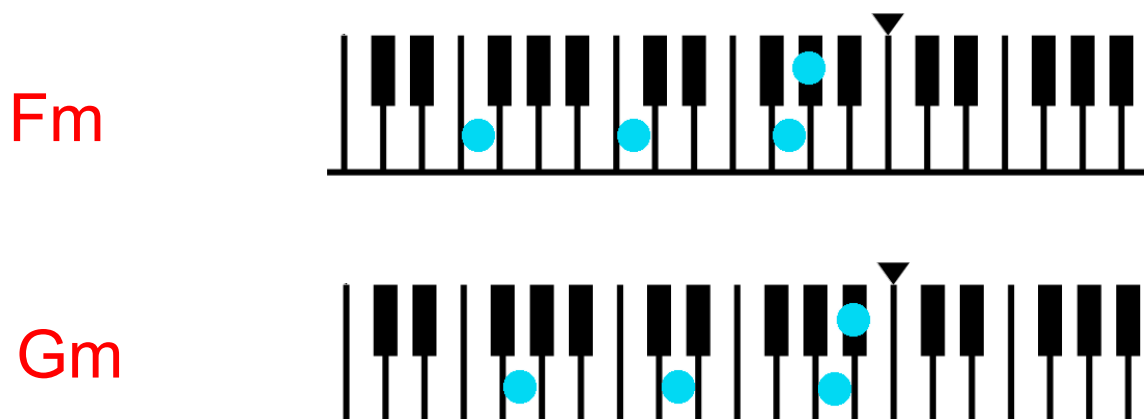
Play each note separately from the C to the G to the D to the D# back to the D



Here's how it looks in musical notation. Listen carefully to the rhythm.



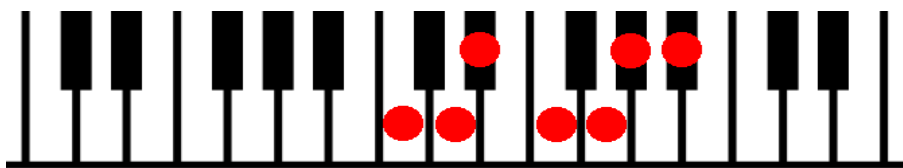
Now transpose the pattern to the chords of F minor and G minor and try the progression on the following page



# EXTENDING THE LEFT HAND

## C MINOR JAZZ 12 BAR BLUES

Improvise in the RIGHT HAND using the following Cminor / scale



First system of the 12-bar blues progression, measures 1-3. The key signature is C minor (one flat). The bass line consists of eighth notes: C2, D2, E-flat2, F2, G2, A-flat2, B-flat2, and C3. The right hand is marked with a whole rest and the chord **Cm**.

Second system of the 12-bar blues progression, measures 4-6. The key signature is C minor (one flat). The bass line continues with eighth notes: C2, D2, E-flat2, F2, G2, A-flat2, B-flat2, and C3. The right hand is marked with a whole rest and the chord **Fm**.

Third system of the 12-bar blues progression, measures 7-9. The key signature is C minor (one flat). The bass line continues with eighth notes: C2, D2, E-flat2, F2, G2, A-flat2, B-flat2, and C3. The right hand is marked with a whole rest and the chords **Cm** (measures 7-8) and **Gm** (measure 9).

Fourth system of the 12-bar blues progression, measures 10-12. The key signature is C minor (one flat). The bass line continues with eighth notes: C2, D2, E-flat2, F2, G2, A-flat2, B-flat2, and C3. The right hand is marked with a whole rest and the chords **Fm** (measures 10-11) and **Cm** (measure 12).