

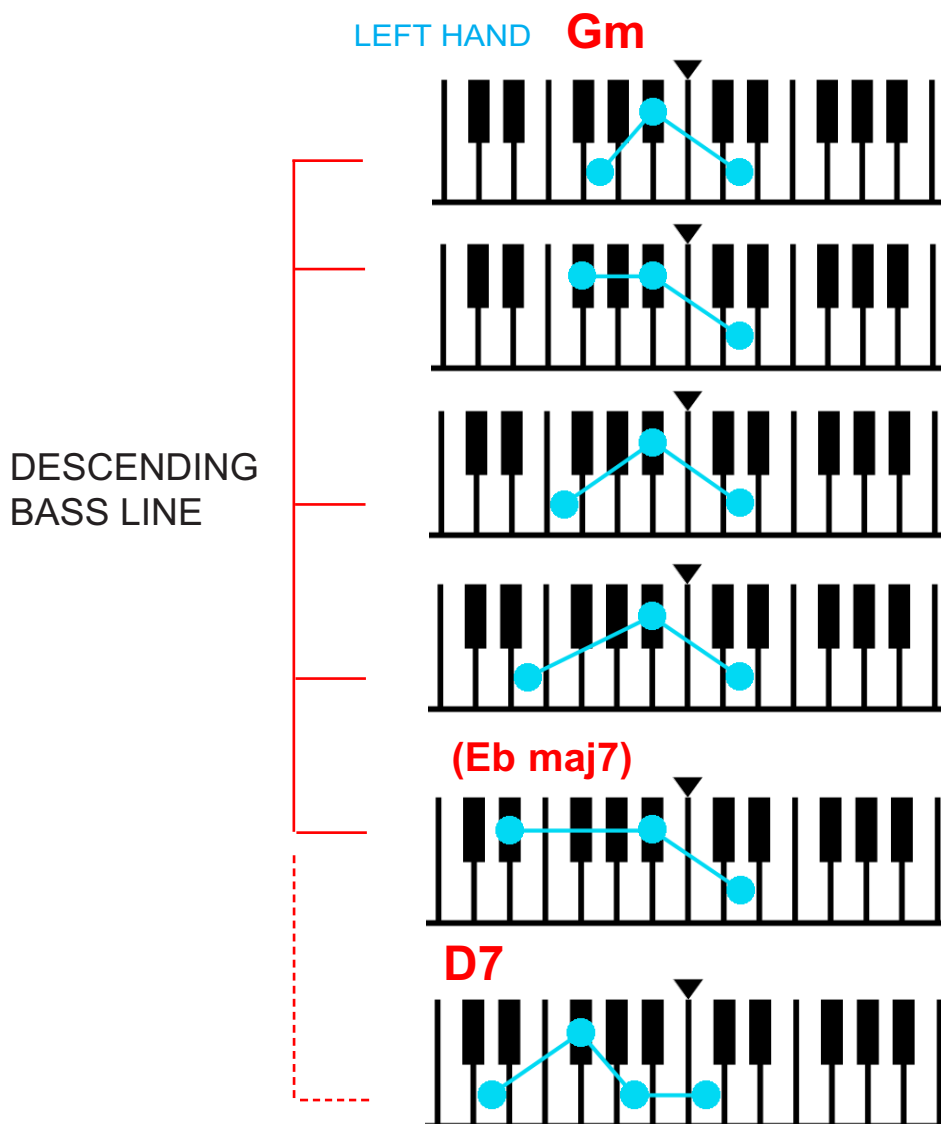
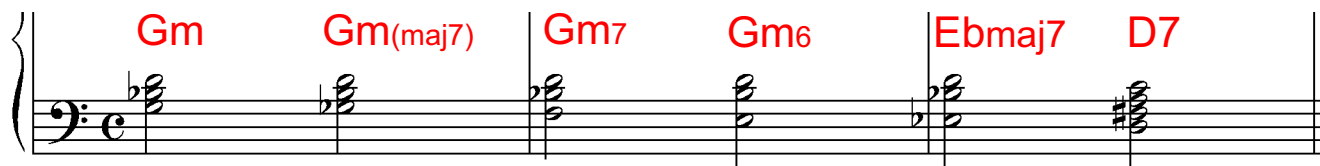
## ODDS AND ENDS



## DESCENDING BASE LINE

### My Funny Valentine / Masquerade

A common technique used to create interest in slow songs is a descending bass line. Basically the root moves down in semitones. Try the following sequence..



In your right hand play the melody for 'My Funny Valentine' or 'Masquerade' by George Benson. This device is also used in 'Michelle' by The Beatles. Or you could IMPROVISE using the **G BLUES scale**.

