

ADVANCED BLUES

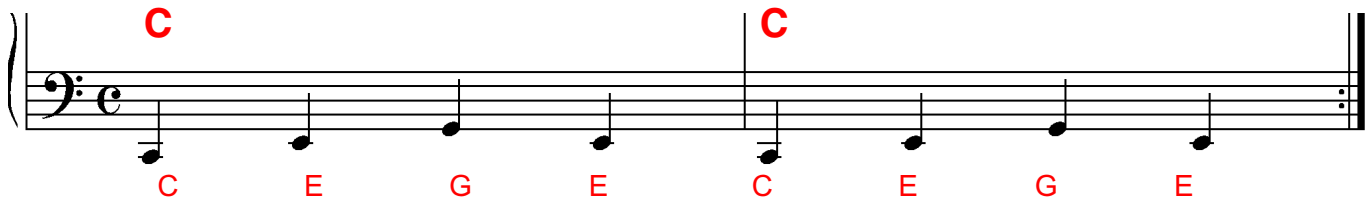


ADVANCED BLUES PIANO

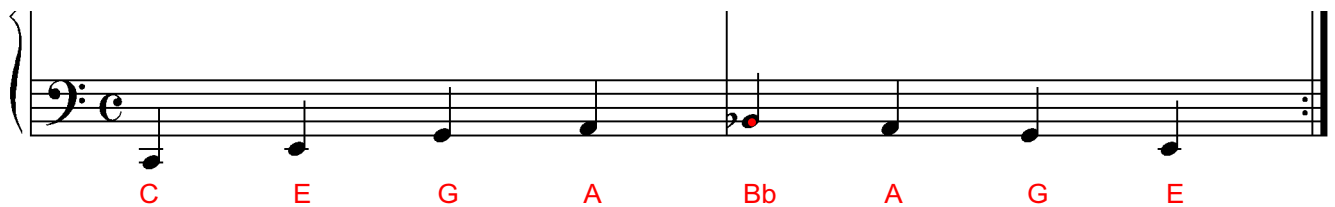
A RECAP ON BOOK 2

In BOOK 2 you learned various **LEFT HAND** Rhythms

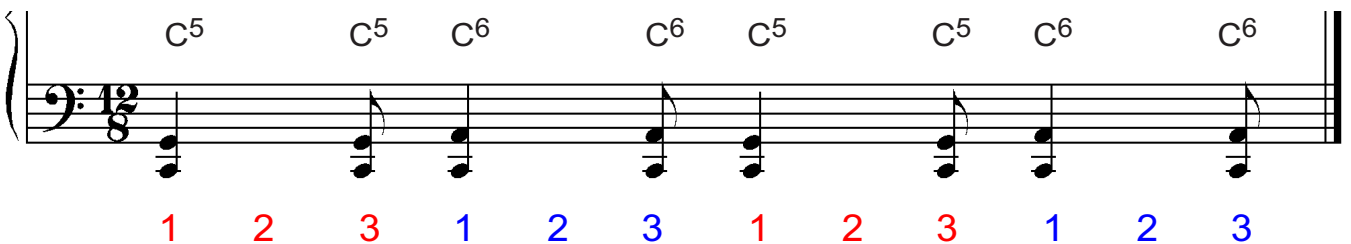
1. TRIAD BLUES



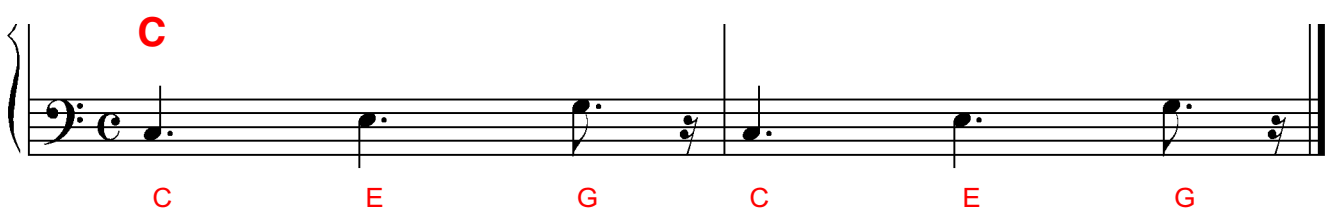
2. STRAIGHT EIGHT BOOGIE RHYTHM



3. THE 12/8 BOOGIE SHUFFLE RHYTHM



4. You can also use the TWIST RHYTHM you learned in book 1



ADVANCED BLUES PIANO

EXTENDING THE RIGHT HAND CHORDS

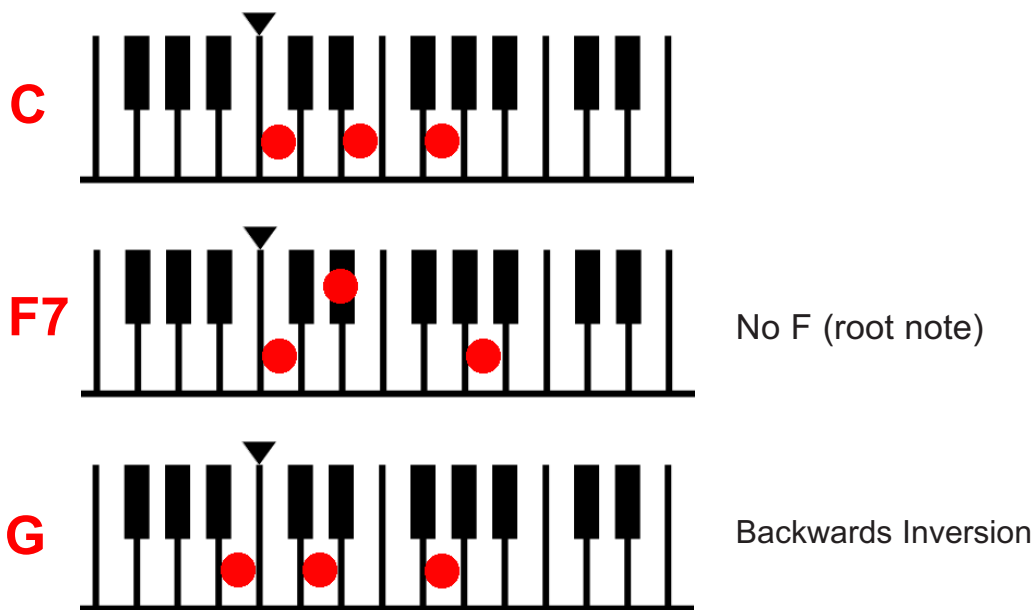
Don't be thinking that your RIGHT HAND has to be playing complicated riffs all the time. Blues is very rhythmic and because it is very often accompanying a song it needs to be rhythmic at times

You learned to add in a Right hand chord at the start of each bar in book 2

Now it's time to make Right Hand chords a bit more interesting.

First of all instead of just playing plain old basic triad chords in the right hand let's introduce some sevenths and some inversions

Find these three RIGHT HAND chords for the next practice tune



You're going to play them with what is called an 'OFF ON' rhythm.

The first beat is as if you are taking your hand quickly OFF the keys (you snap at the chord quickly) The second beat is as if you are placing the chord back ON the piano - and it is held for longer.

Notice that I have alternated where the FIRST Right Hand beat of each bar comes in so that you can practice both.

RIGHT HAND CHORD RIFFS
OFF-ON BOOGIE
STRAIGHT EIGHT BOOGIE (Left Hand)

'OFF' 'ON'

Measures 1-3 of the Off-On Boogie riff. The right hand plays a sequence of chords: C (measure 1), F7 (measure 2), C (measure 3). The left hand plays a steady eighth-note bass line. Red dashed lines indicate the 'OFF' and 'ON' points for the right hand chords.

4

Measures 4-6 of the Off-On Boogie riff. The right hand plays a sequence of chords: F7 (Middle) (measure 4), C (measure 5), F7 (Middle) (measure 6). The left hand continues the eighth-note bass line.

7

Measures 7-9 of the Off-On Boogie riff. The right hand plays a sequence of chords: C (measure 7), F7 (Middle) (measure 8), G (Backwards) (measure 9). The left hand continues the eighth-note bass line.

10

Measures 10-12 of the Off-On Boogie riff. The right hand plays a sequence of chords: F7 (Middle) (measure 10), C (measure 11), F7 (Middle) (measure 12). The left hand continues the eighth-note bass line.

RIGHT HAND CHORD RIFFS

OFF-ON SHUFFLE

12/8 SHUFFLE (Left Hand)

'OFF' 'ON'

C

F7 (Middle)

C

G (Backwards)

F7 (Middle)

C